

Client Side Samba

Linux Clients in Microsoft Windows ADS Environments

Günther Deschner

Samba Team

Lars Müller

Samba Team

October 13, 2006



Novell®

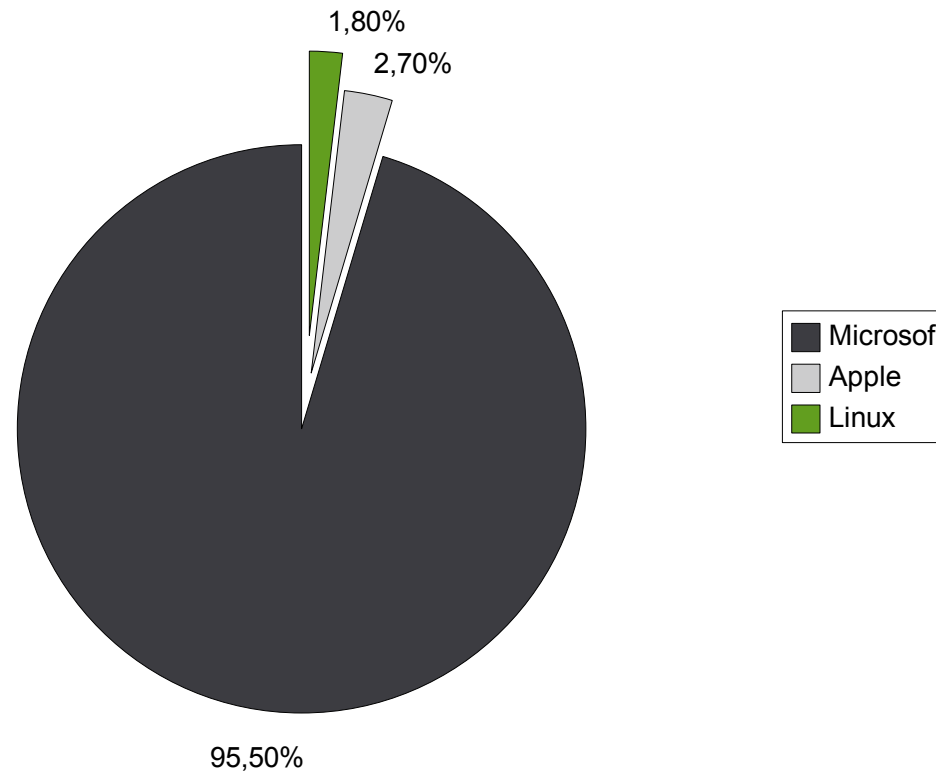
Outline

- Motivation
- Mandatory Requirements
 - Overview
 - Authentication
 - Architecture Overview
- Supplementary Requirements
- GUI system configuration tool/ YaST integration
- Live Demonstration
- To do
- Available Resources and Q&A

Motivation

Data source: Süddeutsche Zeitung, 2006-04-05

Operating Systems Market Share (Desktop and Server)



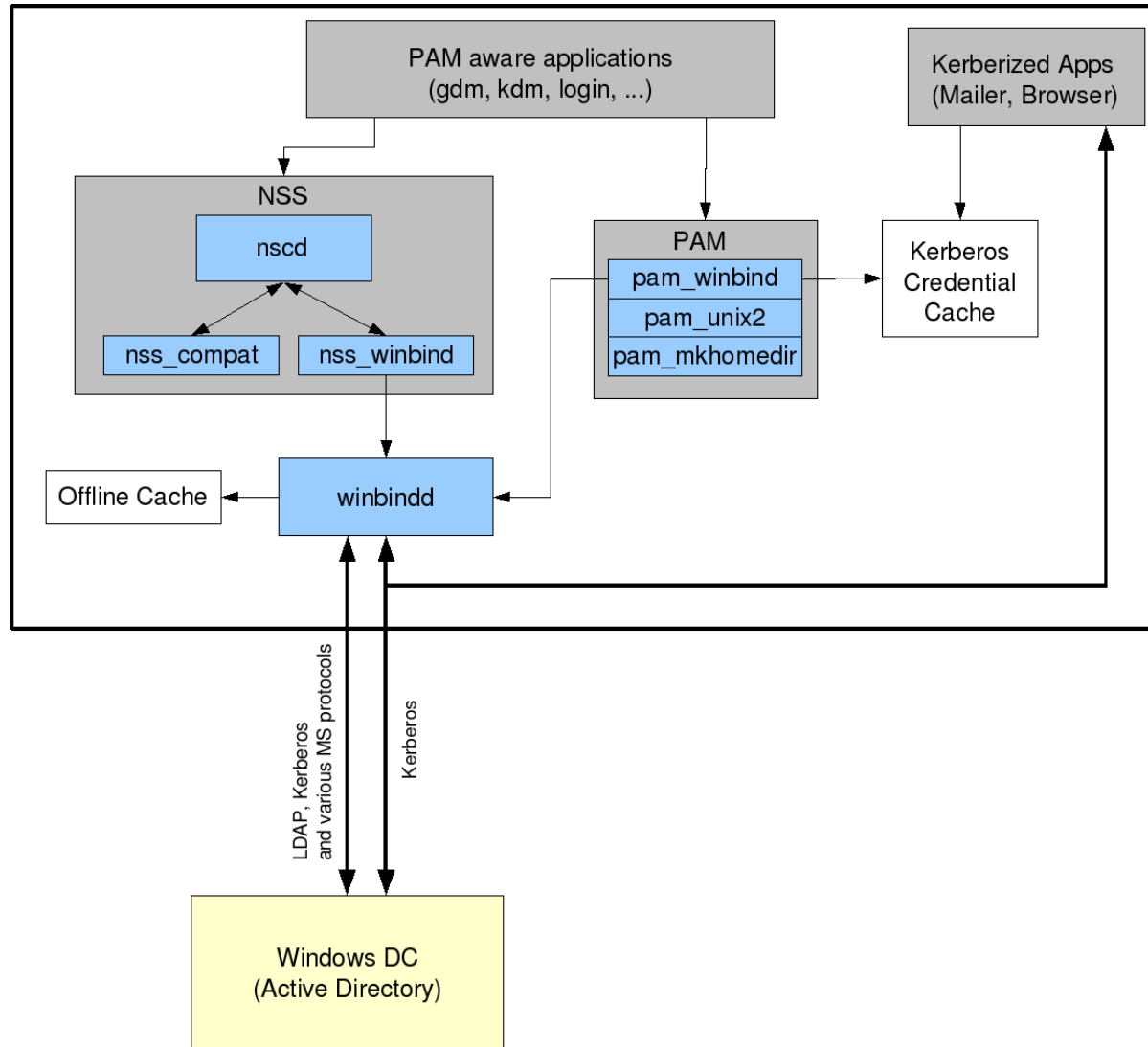
Mandatory Requirements Overview

- Trust relationship creation (domain join)
- Pluggable Authentication Modules (PAM)
 - Single Sign On Authentication (Kerberos)
- Name Service Switch (NSS)
- X11 Display Manager integration (KDM, GDM)
- GUI system configuration utilities (YaST)

Mandatory Requirement Authentication^N

- Seamless PAM Integration
 - Abstract complex SSO to fit into PAM (incl. MS error codes)
- Kerberized PAM Winbind
 - Automatic ticket retrieve, renew, and refresh
- Account Policies
 - Password, Logon hours, Lockout

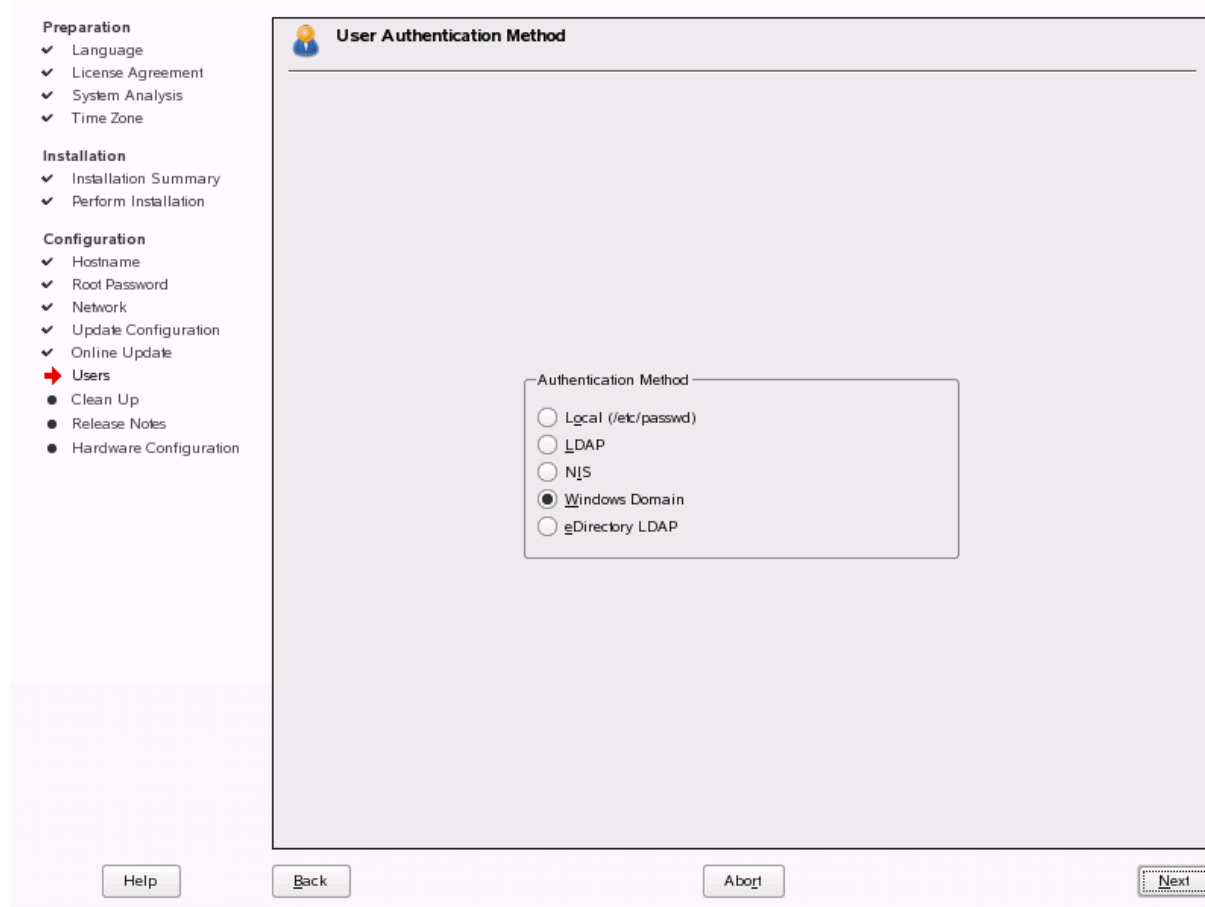
Architecture Overview



Supplementary Requirements

- Disconnected use (offline mode)
- SSO File Access
 - libsmbclient using apps (konqueror, nautilus)
 - Linux-CIFS kernel client
- SSO Printing

YaST Integration (1)



YaST Integration (2)

The screenshot shows the YaST configuration window for "Windows Domain Membership". The window is divided into two main sections: a left sidebar with instructions and a main configuration area.

Left Sidebar: Selecting Windows Domain Membership

Specify the name of the NT or Active Directory domain. **Browse** presents the list of all domains found in the network.

When you press **Next**, the system verifies the domain and allows this host to join the domain.

Check **Create Home Directory on Login** to have home directories created on the first login.

Offline Authentication enables the user to log in even if there is no connection to the domain controller. For this option to work, you must log in to your domain at least once. The user's credentials are then stored encrypted on your computer and are reused for a domain login when no connection to the domain controller can be established. This is especially useful for mobile users.

Allow Users to Share Their Directories enables members of the group in

Main Configuration Area: Windows Domain Membership

Membership

Domain: SAMBAXP-DEMO [Browse...]

Create Home Directory on Login

Offline Authentication

Sharing by Users

Allow Users to Share Their Directories

Permitted Group: users

Maximum Number of Shares: 100

Buttons: Back, Abort, Next

Samba Winbind AD Integration Demo

To do

- Domain logon
 - Accessing CIFS Home Directory
 - Group Policy Support (GPO)
 - Roaming Profiles
 - Logon Scripts
- Machine Account Password Changes
- Localisation (PAM and error messages)
- GUI integration for Services For UNIX (SFU)
- NTLM (non kerberized) SSO for Firefox
- Site support

Available Resources

- SUSE Linux Enterprise Desktop 10
- <http://openSUSE.org/Samba>
- Samba.org samba-docs subversion (soon)

Questions & Answers

?

Novell®